

contact us...

18999 US Highway 27 North
Marshall, MI 49068
1.800.962.1495
info@johnsonsysteminc.com

JOHNSON

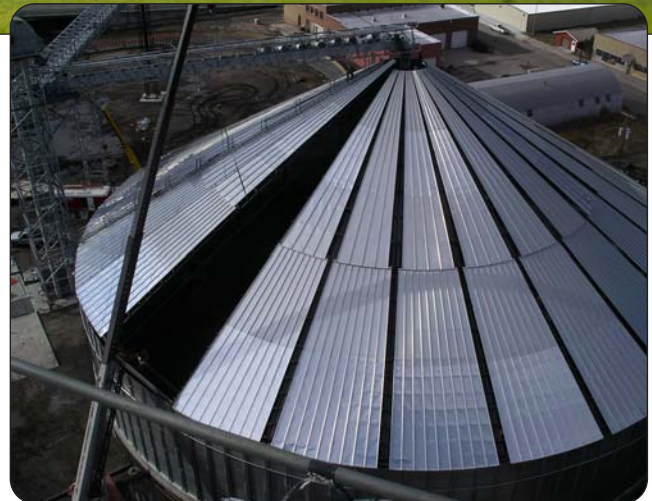
**SYSTEM
INC.**

Designing for Growth

The Big Max is an intermediate system between temporary and traditional storage. It combines all-weather operation with lower construction cost, for situations when inventory will turn only once or twice a year.

BIG MAX

Traditional structural components are used to provide permanent structural integrity. Each system is accompanied with an engineer's analysis statement and stamp.



visit us online @
www.johnsonsysteminc.com

Efficient New Design
Fully Stiffened Side Wall
New Inside Structural Support

Tunnel Reclaim - Choice of Capacities
Above Floor Aeration

Center Support Towers
Grain Let-Down Ladders
Center Tower Aeration
Access Ladder
40,000# Peak Load

FEATURES



185' dia. x 8 rings = 944,500 bushels
232' dia. x 7 rings = 1,450,000 bushels

13' High x 12' Wide Vehicle Door
Sidewall and (3) Roof Manway Doors
(18) Internal Support Towers for 232'

20#, 30#, 40# Roof Loads Available
90 MPH Wind Load Standard
Clear Span: Center to Wall 185'

SPECIFICATIONS



JOHNSON

SYSTEM
INC.

Designing for Growth

contact us...

18999 US Highway 27 North
Marshall, MI 49068
1.800.962.1495

info@johnsonsysteminc.com

visit us online @

www.johnsonsysteminc.com